

INSULATED BOX TEST REPORT.

<p>Date: Jul 2020</p> <p>Box name (model): TM-1</p> <p>Internal volume: 1.6L</p> <p>Netto weight: 0.5KG</p> <p>Brutto weight: 1.0 KG</p> <p>Size: 200 x 115 x 65 mm</p> <p>External temperature: +34 °C</p> <p>Box internal temperature range: +2 °C ÷ +8 °C</p> <p>Ice Packs, pcs: 2 pcs. MXD-3</p>	<p>Graph</p> <div style="text-align: center; font-weight: bold; font-size: 1.2em;">TM-1</div> <table border="1" style="width: 100%; margin-top: 10px; border-collapse: collapse; font-size: 0.8em;"> <caption>Graph Data Points</caption> <thead> <tr> <th>Time</th> <th>Temperature in container (°C)</th> </tr> </thead> <tbody> <tr><td>4 h 25 min.</td><td>3,6</td></tr> <tr><td>11 h 0 min.</td><td>3,5</td></tr> <tr><td>15 h 0 min.</td><td>3,7</td></tr> <tr><td>21 h 30 min.</td><td>7,9</td></tr> </tbody> </table> <p style="font-size: 0.8em; margin-top: 10px;"> — Temperature in temperature chamber, °C — Temperature in the container, °C - - - Threshold 2 °C - - - Threshold 8 °C </p>	Time	Temperature in container (°C)	4 h 25 min.	3,6	11 h 0 min.	3,5	15 h 0 min.	3,7	21 h 30 min.	7,9
Time	Temperature in container (°C)										
4 h 25 min.	3,6										
11 h 0 min.	3,5										
15 h 0 min.	3,7										
21 h 30 min.	7,9										
<p>Test result: PASSED</p>	<p>21 hrs. 35 min - Total time inside temperature range +2 °C ÷ +8 °C with external temperature + 34°C</p>										



INSULATED BOX TEST REPORT.

Date: Jul 2020

Box name (model): TM-1

Internal volume: 1.6L

Netto weight: 0.5KG

Brutto weight: 1.0 KG

Size: 200 x 115 x 65 mm

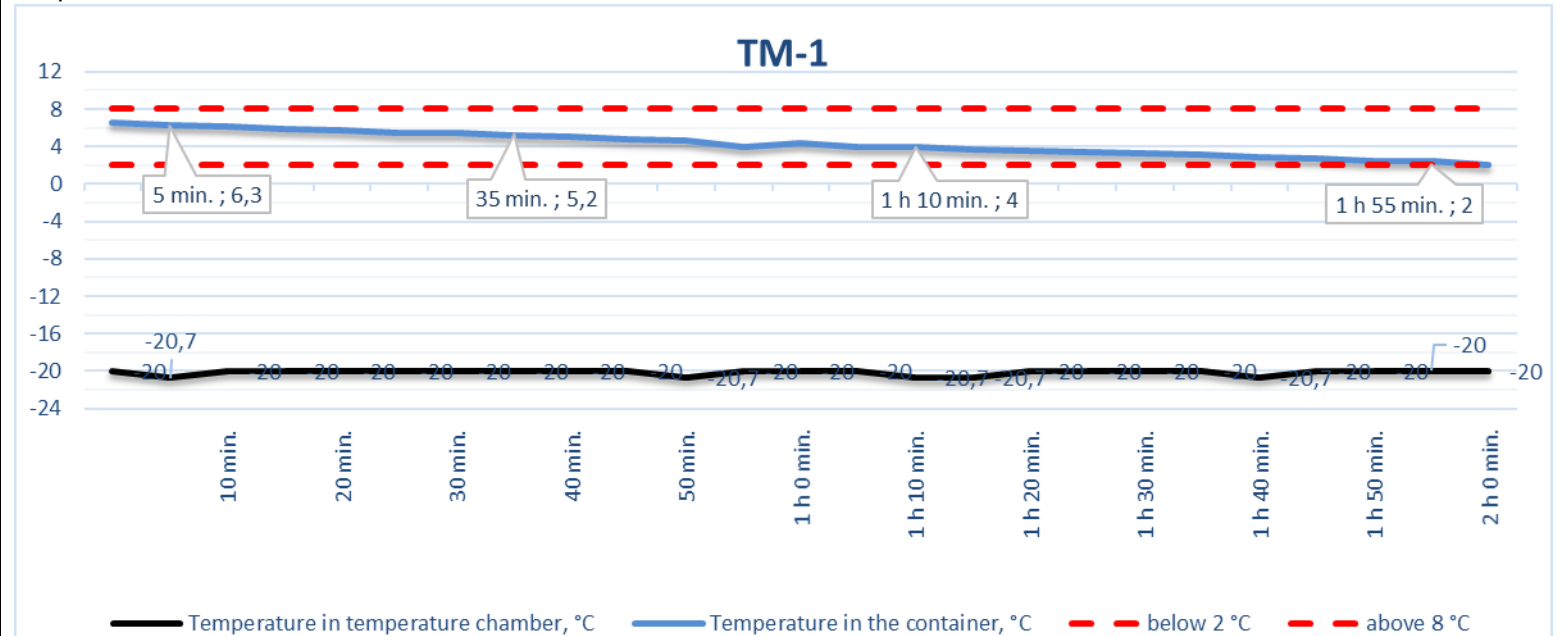
External temperature: - 20 °C

Box internal temperature range:

+2 °C ÷ +8 °C

Ice Packs, pcs: 2 pcs. MXD-3

Graph



Test result: PASSED

2 hrs 0 min - Total time inside temperature range +2 °C ÷ +8 °C with external temperature - 20 °C



INSULATED BOX TEST REPORT.

Date: Jul 2020

Box name (model): TM-5

Internal volume: 5.7L

Netto weight: 1.2KG

Brutto weight: 3.7 KG

Size: 320 x 260 x 270 mm

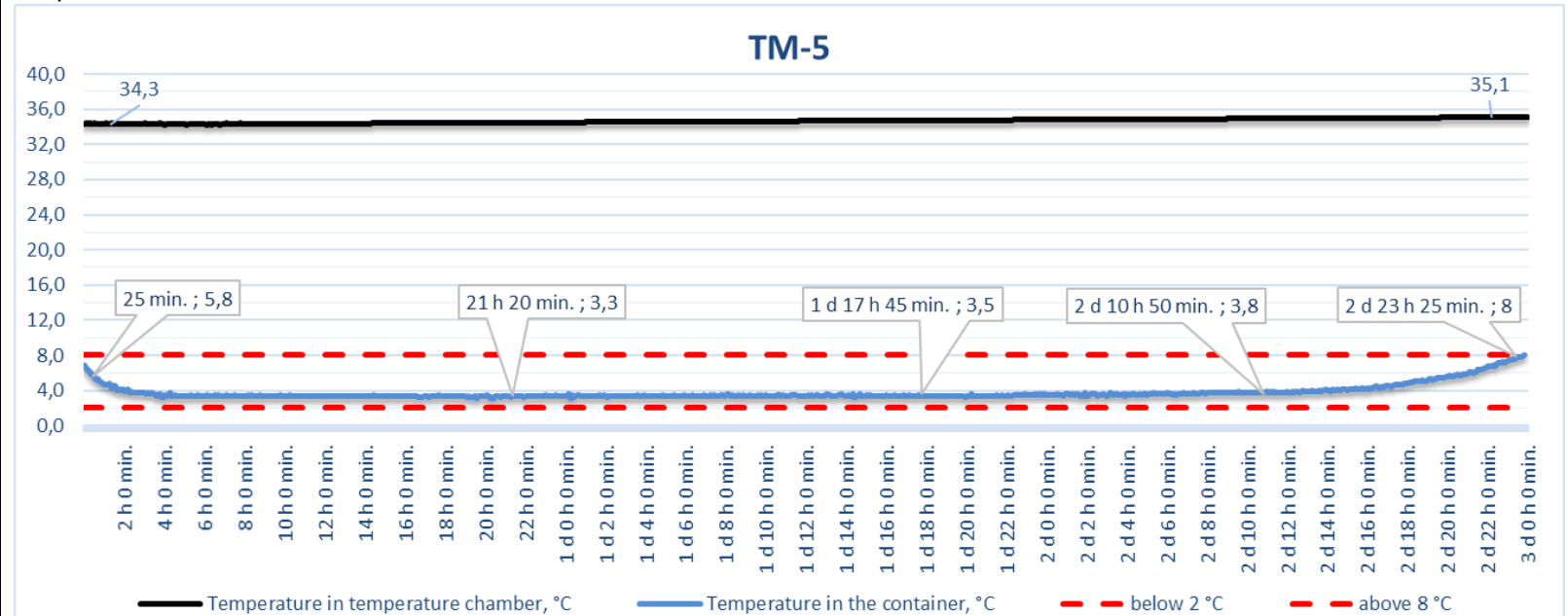
External temperature: +34 °C

Box internal temperature range:

+2 °C ÷ +8 °C

Ice Packs, pcs: 5 pcs. MXD-1

Graph



Test result: **PASSED**

71 hrs. 50 min - Total time inside temperature range +2 °C ÷ +8 °C with external temperature +34 °C



INSULATED BOX TEST REPORT.

Date: Jul 2020

Box name (model): TM-5

Internal volume: 5.7L

Netto weight: 1.2KG

Brutto weight: 3.7 KG

Size: 320 x 260 x 270 mm

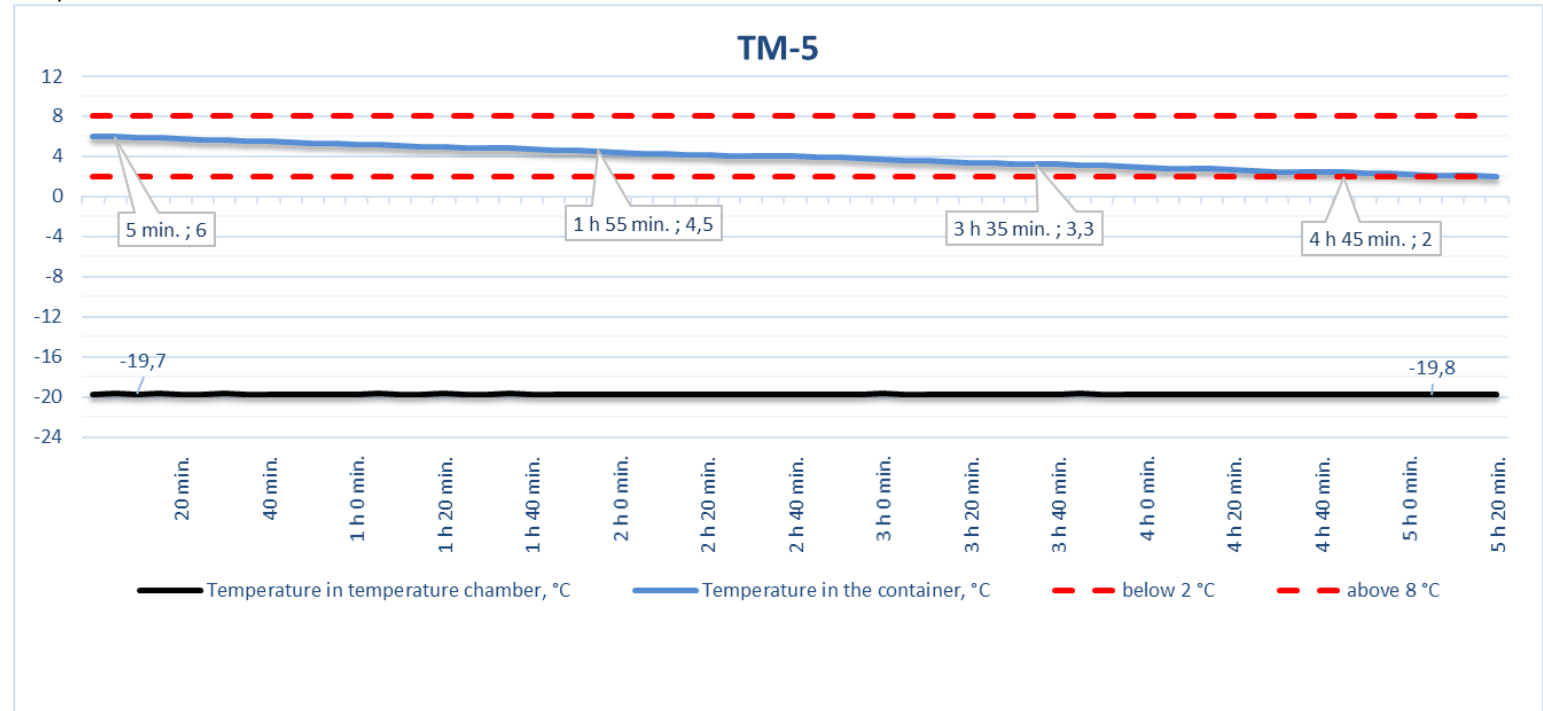
External temperature: -20 °C

Box internal temperature range:

+2 °C ÷ +8 °C

Ice Packs, pcs: 5 pcs. MXD-1

Graph



Test result: **PASSED**

5 hrs. 25 min - Total time inside temperature range +2 °C ÷ +8 °C with external temperature -20 °C



INSULATED BOX TEST REPORT.

Date: Jul 2020

Box name (model): TM-8

Internal volume: 7.8L

Netto weight: 1.2KG

Brutto weight: 4.1 KG

Size: 360 x 240 x 255 mm

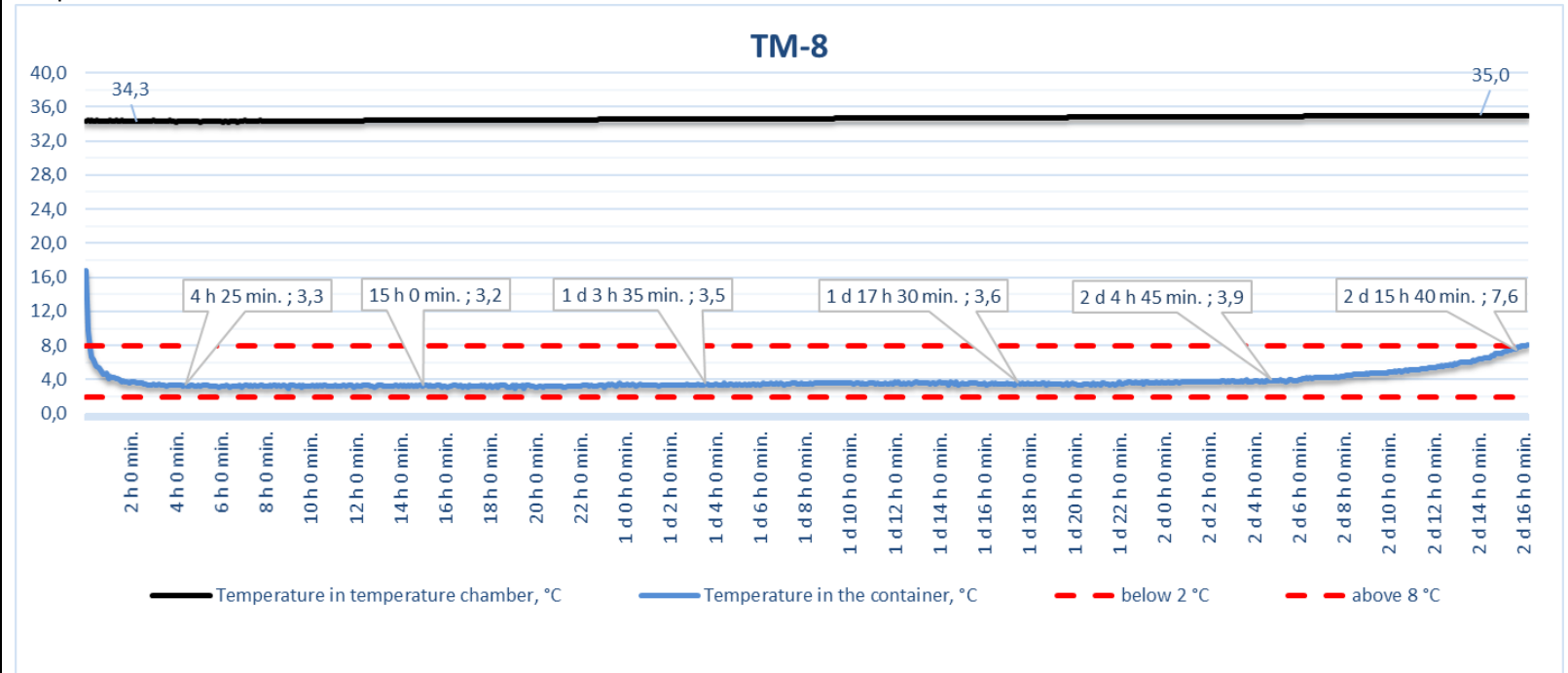
External temperature: +34 °C

Box internal temperature range:

+2 °C ÷ +8 °C

Ice Packs, pcs: 6 pcs. MXD-1

Graph



Test result: **PASSED**

64 hrs 0 min - Total time inside temperature range +2 °C ÷ +8 °C with external temperature +34 °C



INSULATED BOX TEST REPORT.

Date: Jul 2020

Box name (model): TM-8

Internal volume: 7.8L

Netto weight: 1.2KG

Brutto weight: 4.1 KG

Size: 360 x 240 x 255 mm

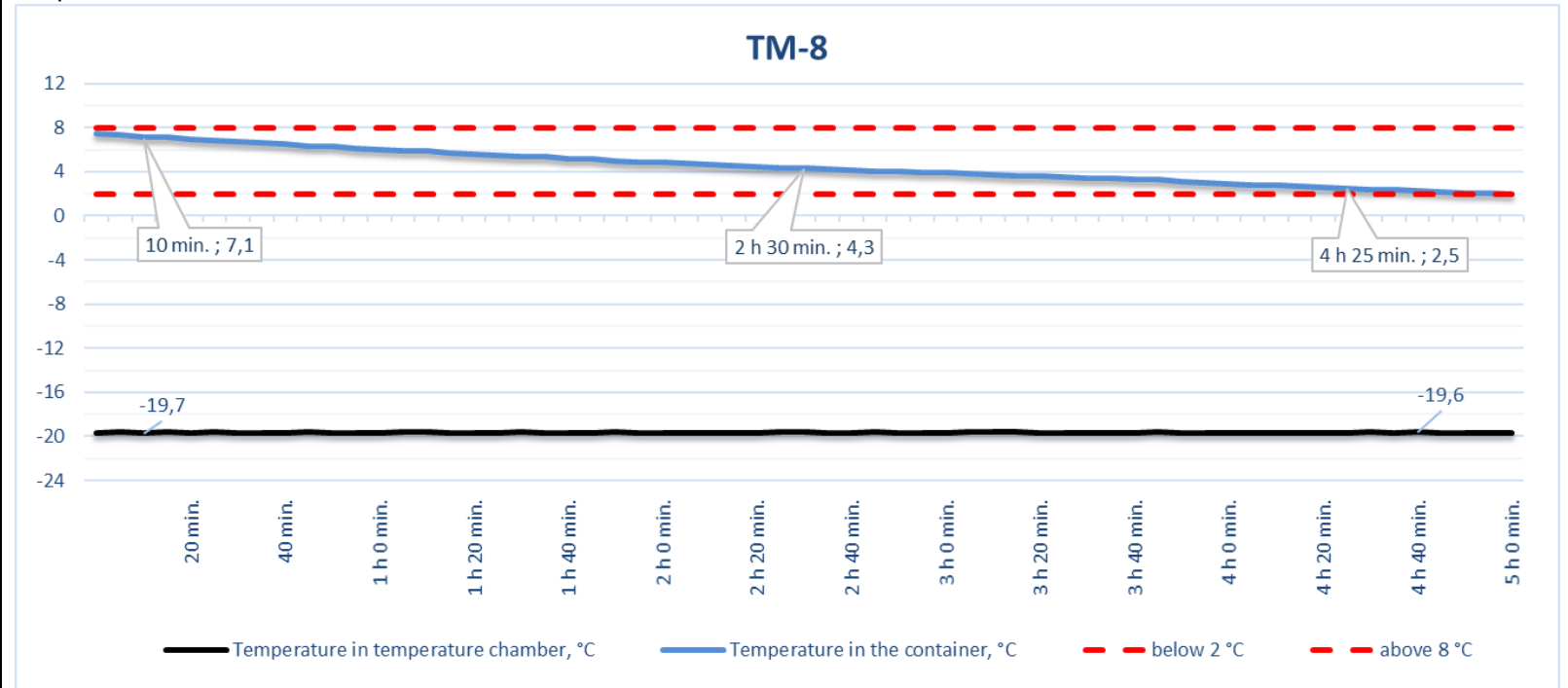
External temperature: -20 °C

Box internal temperature range:

+2 °C ÷ +8 °C

Ice Packs, pcs: 6 pcs. MXD-1

Graph



Test result: **PASSED**

5 hrs 0 min - Total time inside temperature range +2 °C ÷ +8 °C with external temperature -20 °C



INSULATED BOX TEST REPORT.

Date: Jul 2020

Box name (model): TM-20

Internal volume: 25.5L

Netto weight: 2.7 KG

Brutto weight: 11.2 KG

Size: 500 x 360 x 360 mm

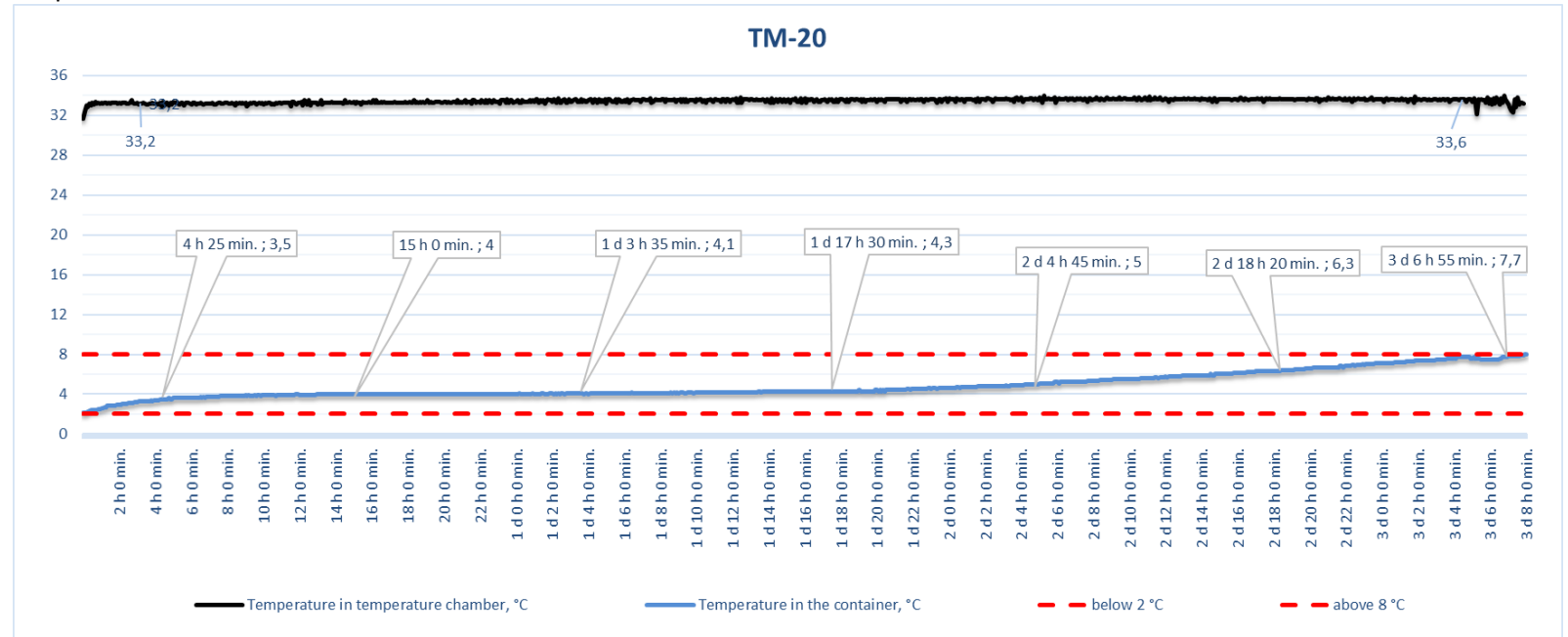
External temperature: +34 °C

Box internal temperature range:

+2 °C ÷ +8 °C

Ice Packs, pcs: 17pcs. MXD-1

Graph

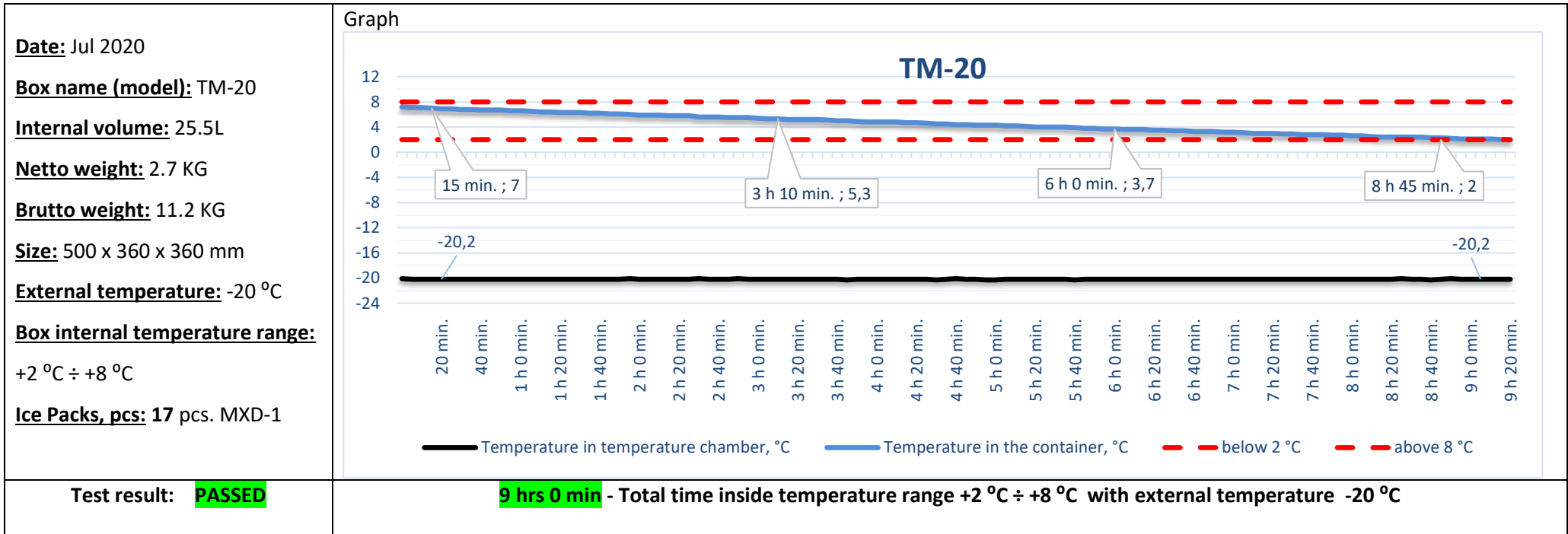


Test result: PASSED

76 hrs 20 min - Total time inside temperature range +2 °C ÷ +8 °C with external temperature +34 °C



INSULATED BOX TEST REPORT.



INSULATED BOX TEST REPORT.

Date: Jul 2020

Box name (model): TM-35

Internal volume: 37L

Netto weight: 3.2 KG

Brutto weight: 14.2 KG

Size: 500 x 355 x 480 mm

External temperature: +34 °C

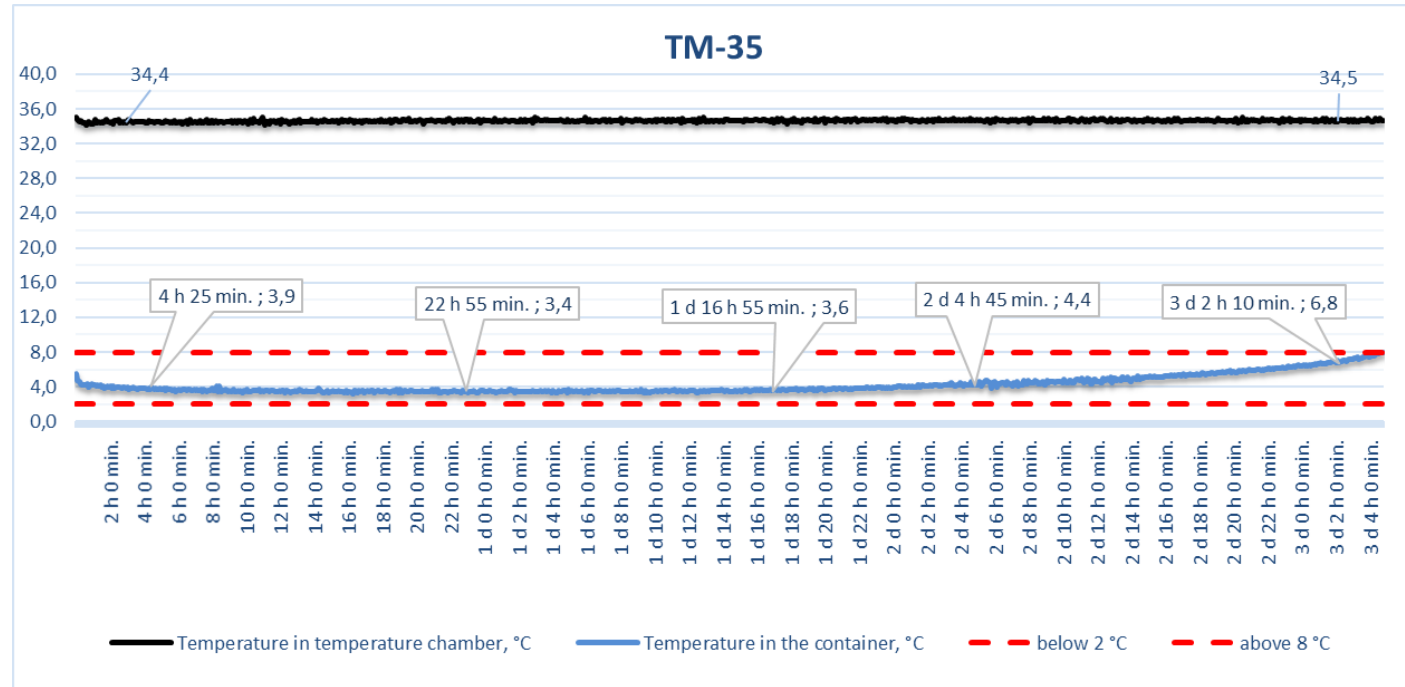
Box internal temperature

range:

+2 °C ÷ +8 °C

Ice Packs, pcs: 22pcs. MXD-1

Graph



Test result: **PASSED**

76 hrs 55 min - Total time inside temperature range +2 °C ÷ +8 °C with external temperature +34 °C



INSULATED BOX TEST REPORT.

Date: Jul 2020

Box name (model): TM-35

Internal volume: 37L

Netto weight: 3.2 KG

Brutto weight: 14.2 KG

Size: 500 x 355 x 480 mm

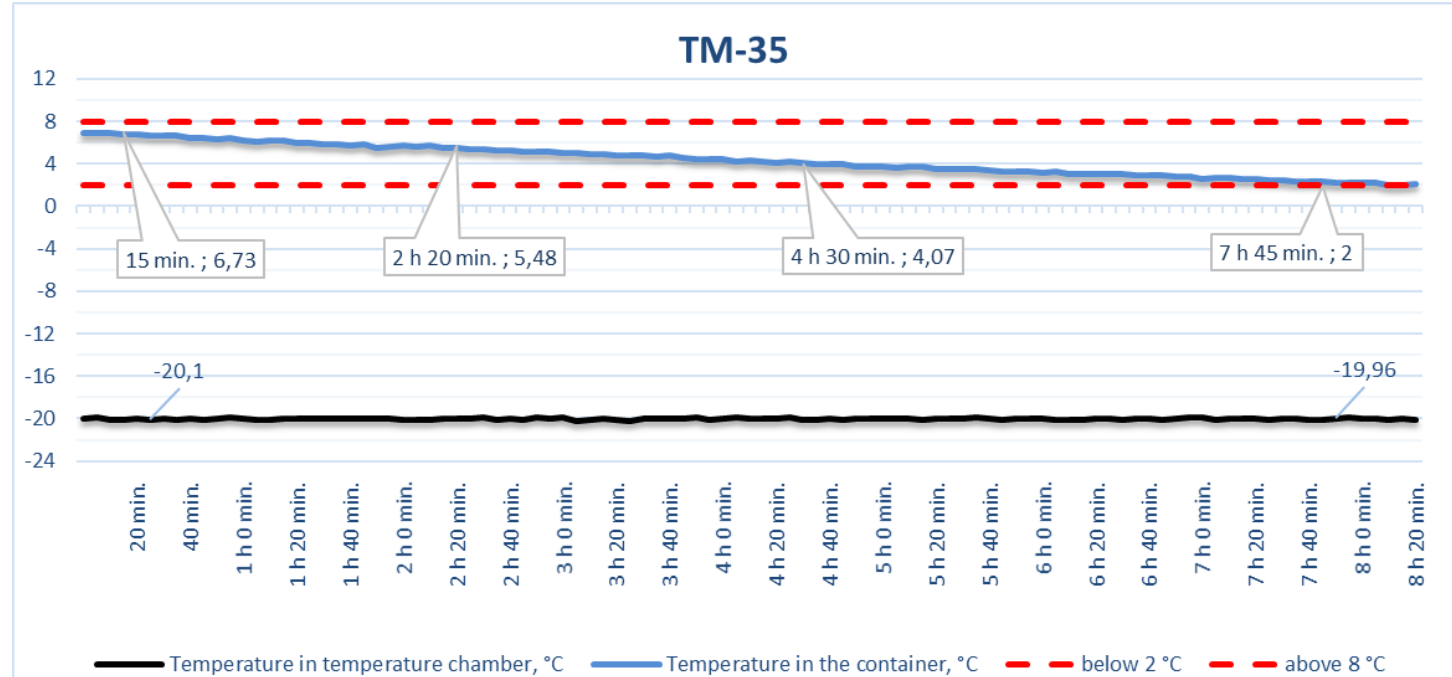
External temperature: -20 °C

Box internal temperature range:

+2 °C ÷ +8 °C

Ice Packs, pcs: 22pcs. MXD-1

Graph



Test result: **PASSED**

8 hrs 20 min - Total time inside temperature range +2 °C ÷ +8 °C with external temperature -20 °C



INSULATED BOX TEST REPORT.

Date: Jul 2020

Box name (model): TM-52

Internal volume: 49.2L

Netto weight: 5.5 KG

Brutto weight: 17.5 KG

Size: 520 x 500 x 520mm

External temperature: +43 °C

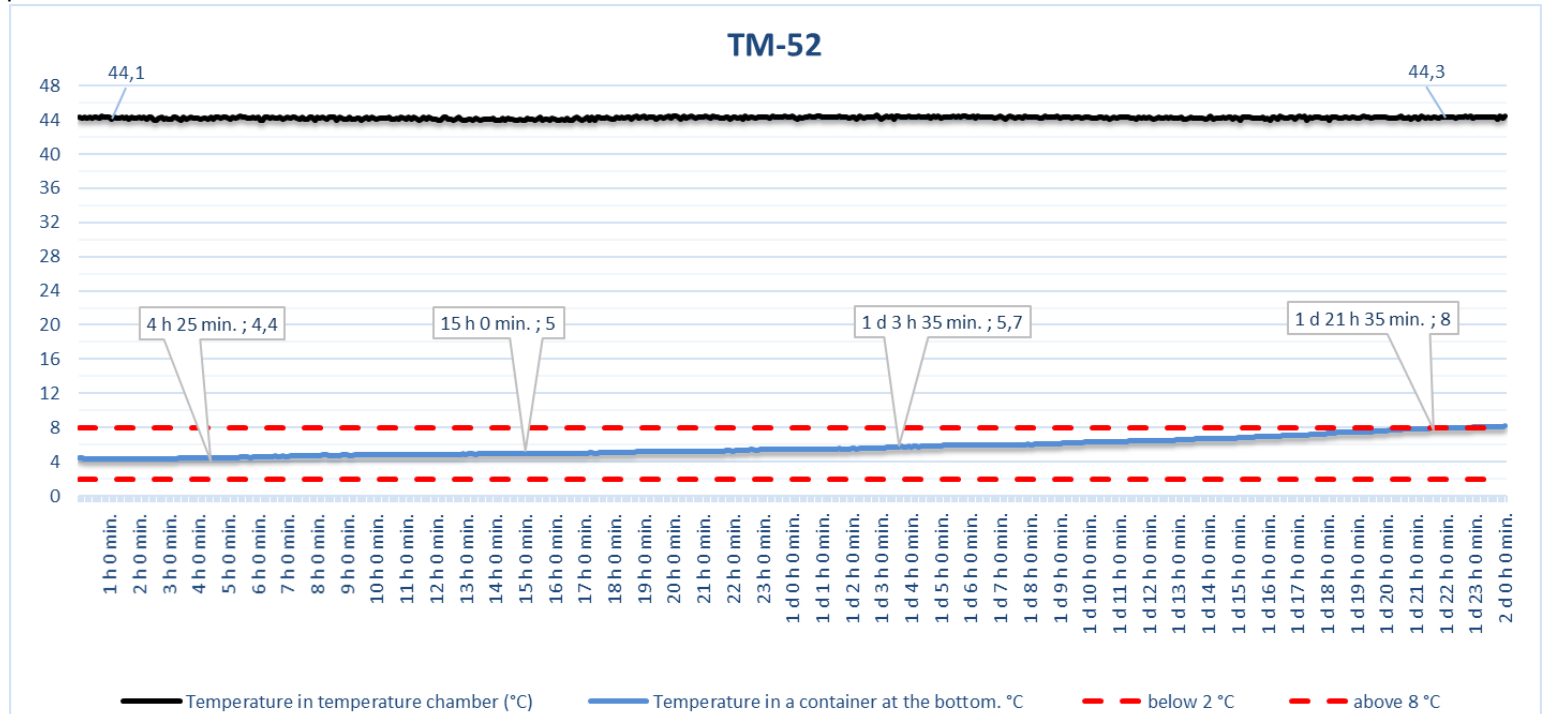
Box internal temperature

range:

+2 °C ÷ +8 °C

Ice Packs, pcs: 24pcs. MXD-1

Graph



Test result: PASSED

46 hrs 50 min - Total time inside temperature range +2 °C ÷ +8 °C with external temperature +43 °C



INSULATED BOX TEST REPORT.

Date: Jul 2020

Box name (model): TM-52

Internal volume: 49.2L

Netto weight: 5.5 KG

Brutto weight: 17.5 KG

Size: 520 x 500 x 520mm

External temperature: -30 °C

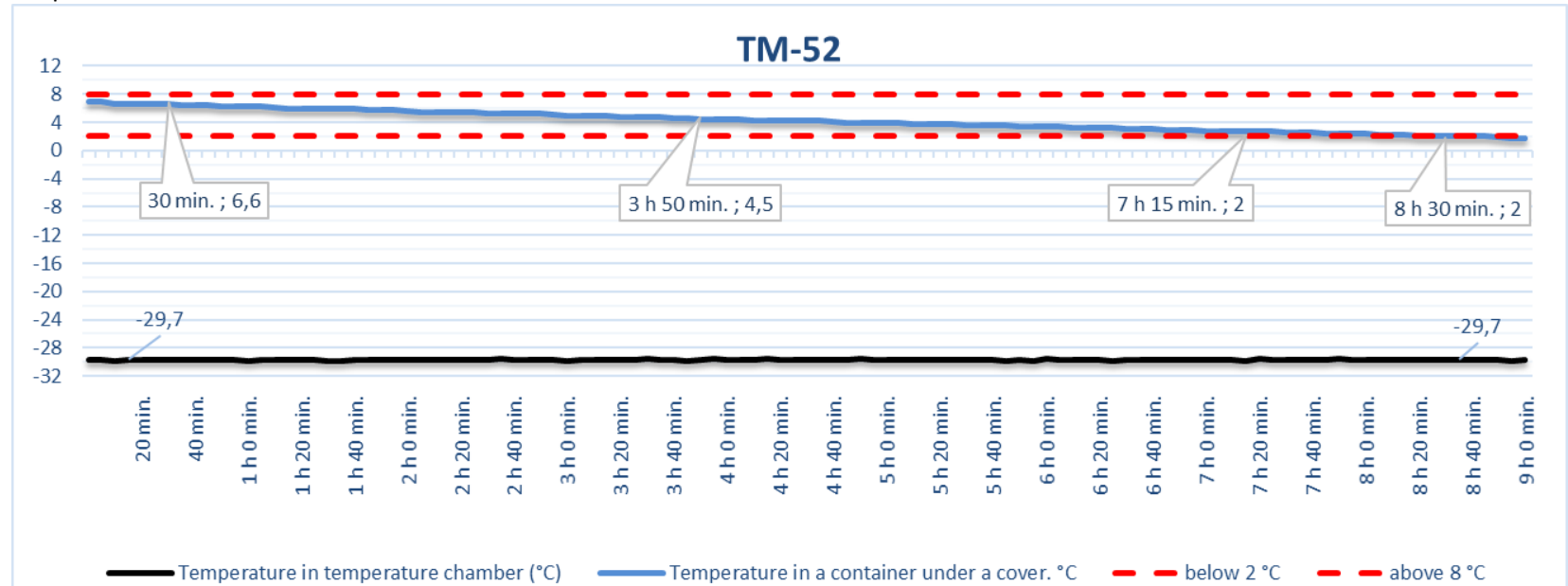
Box internal temperature

range:

+2 °C ÷ +8 °C

Ice Packs, pcs: 24pcs. MXD-1

Graph



Test result: **PASSED**

8 hrs 45 min - Total time inside temperature range +2 °C ÷ +8 °C with external temperature -30 °C



INSULATED BOX TEST REPORT.

Date: Jul 2020

Box name (model): TM-80

Internal volume: 77.3L

Netto weight: 4.9 KG

Brutto weight: 19.4 KG

Size: 720 x 500 x 420 mm

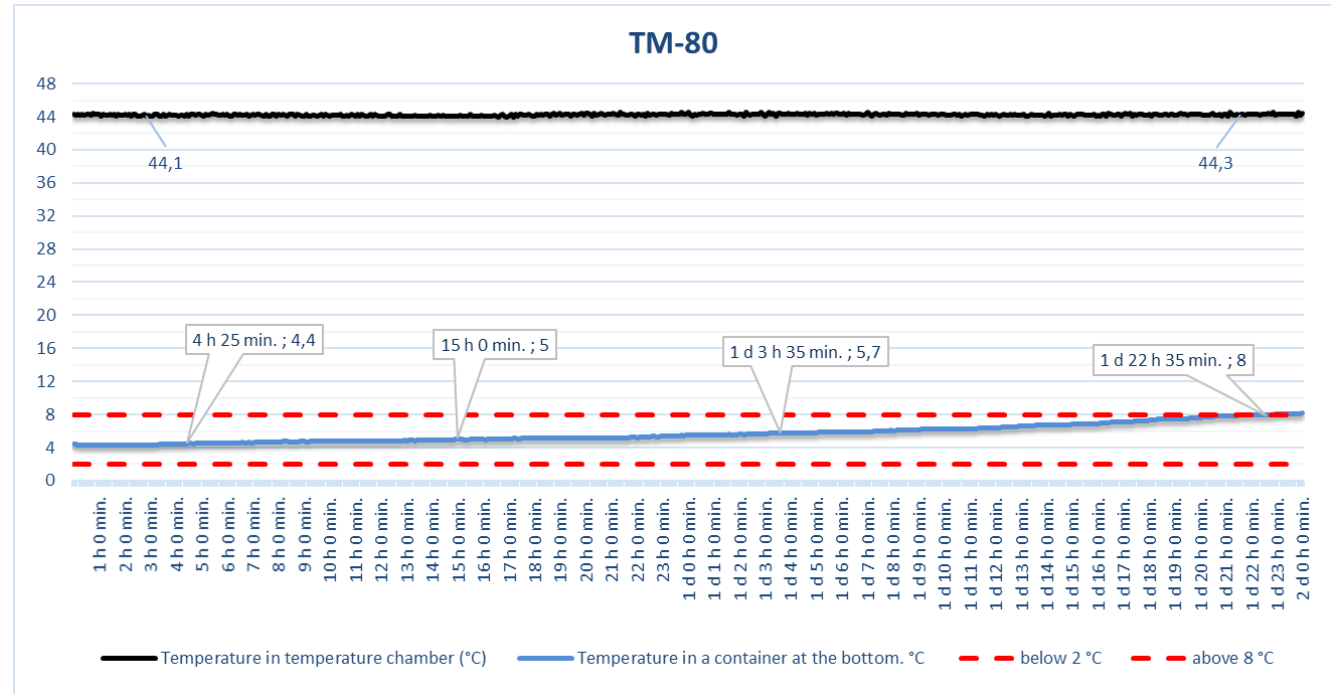
External temperature: +43 °C

Box internal temperature range:

+2 °C ÷ +8 °C

Ice Packs, pcs: 29pcs. MXD-1

Graph



Test result: **PASSED**

46 hrs 55 min - Total time inside temperature range +2 °C ÷ +8 °C with external temperature +43 °C



INSULATED BOX TEST REPORT.

Date: Jul 2020

Box name (model): TM-80

Internal volume: 77.3L

Netto weight: 4.9 KG

Brutto weight: 19.4 KG

Size: 720 x 500 x 420 mm

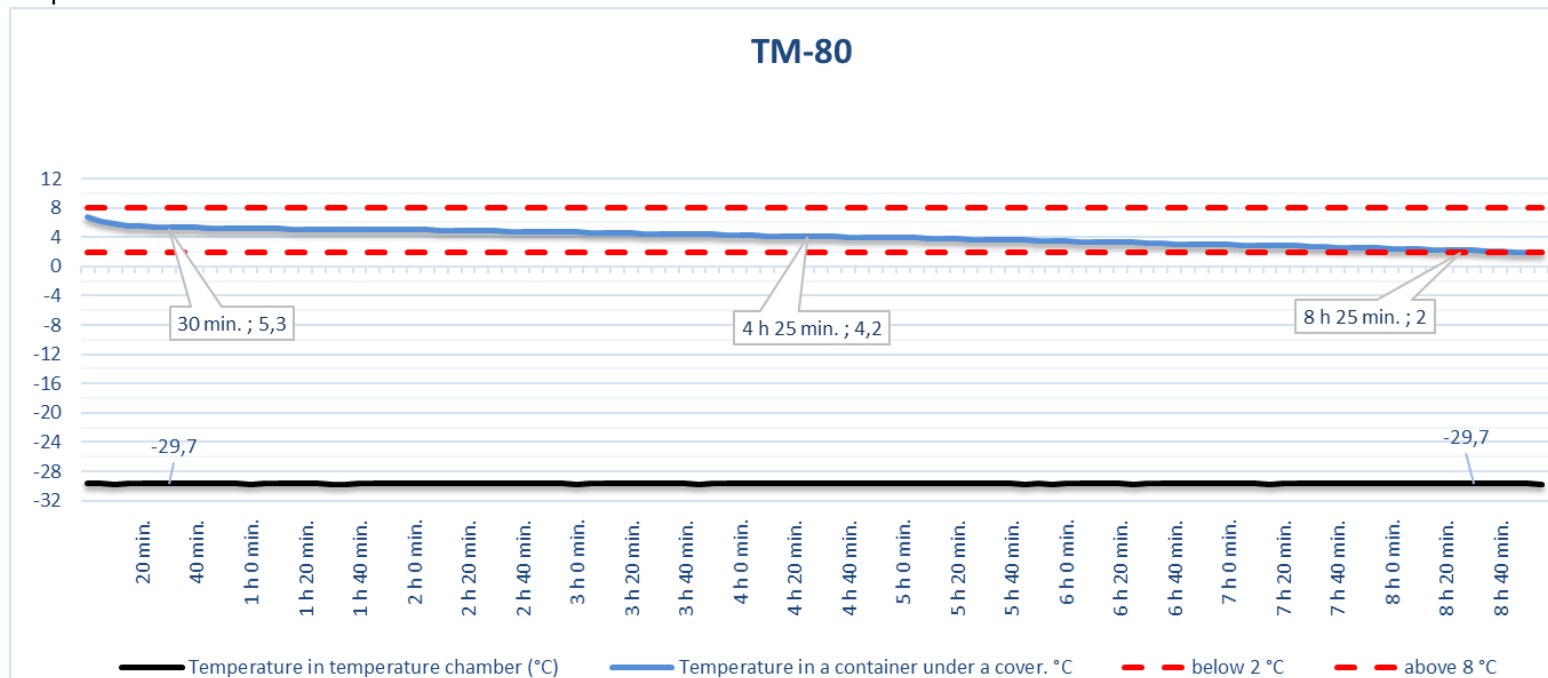
External temperature: -30 °C

Box internal temperature range:

+2 °C ÷ +8 °C

Ice Packs, pcs: 29pcs. MXD-1

Graph



Test result: PASSED

8 hrs 55 min - Total time inside temperature range +2 °C ÷ +8 °C with external temperature -30 °C

